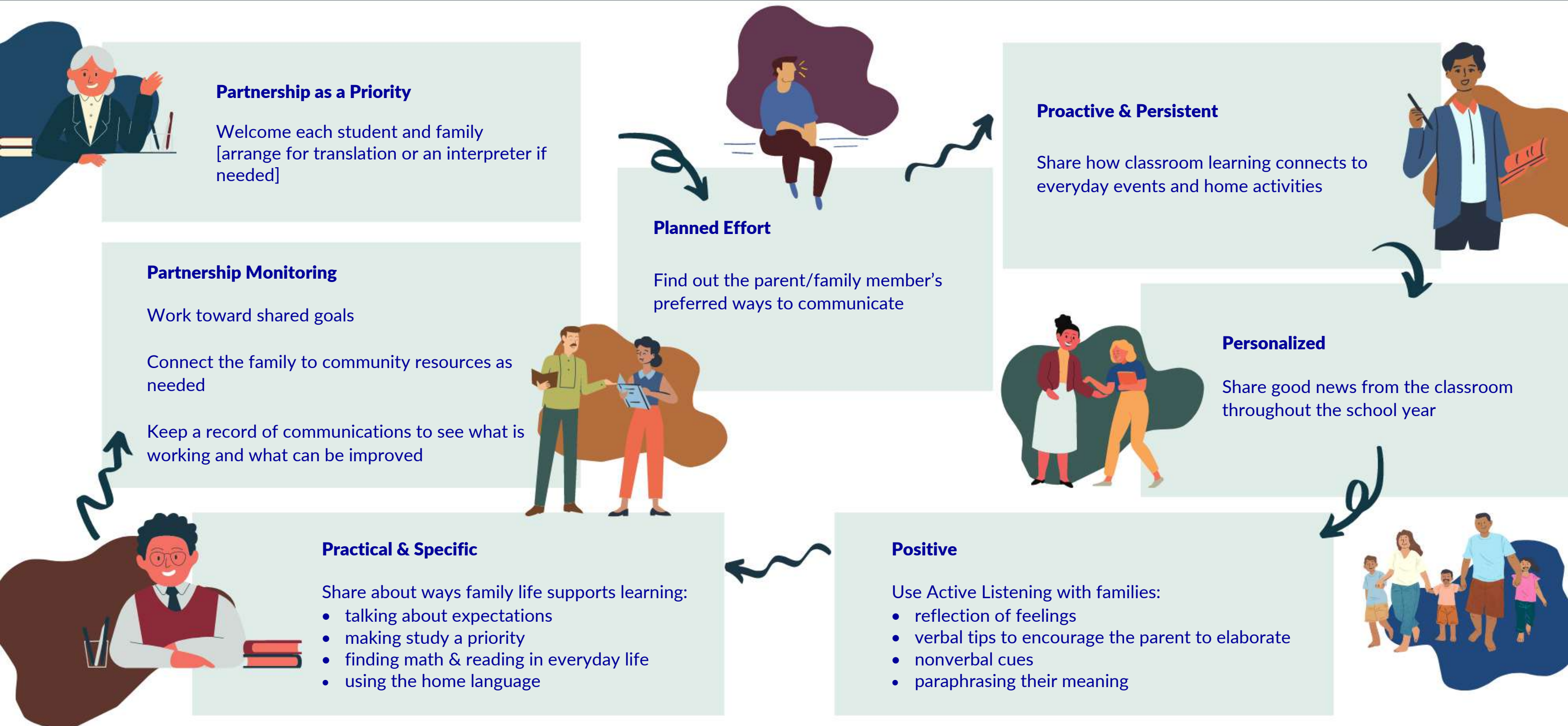


Two-Way Communication with Each Student's Family *Supports Success*



*Headings: Patrikakou, E. N., & Weissberg, R. P., The seven P's of school-family partnerships, as cited in Academic Development Institute (ADI). (2017). *School Community Network resource manual*. ADI. (2019). *A guide for educators: Helping families engage in their children's learning*. <https://www.schoolcommunitynetwork.org/docs/EducatorsGuide.pdf>