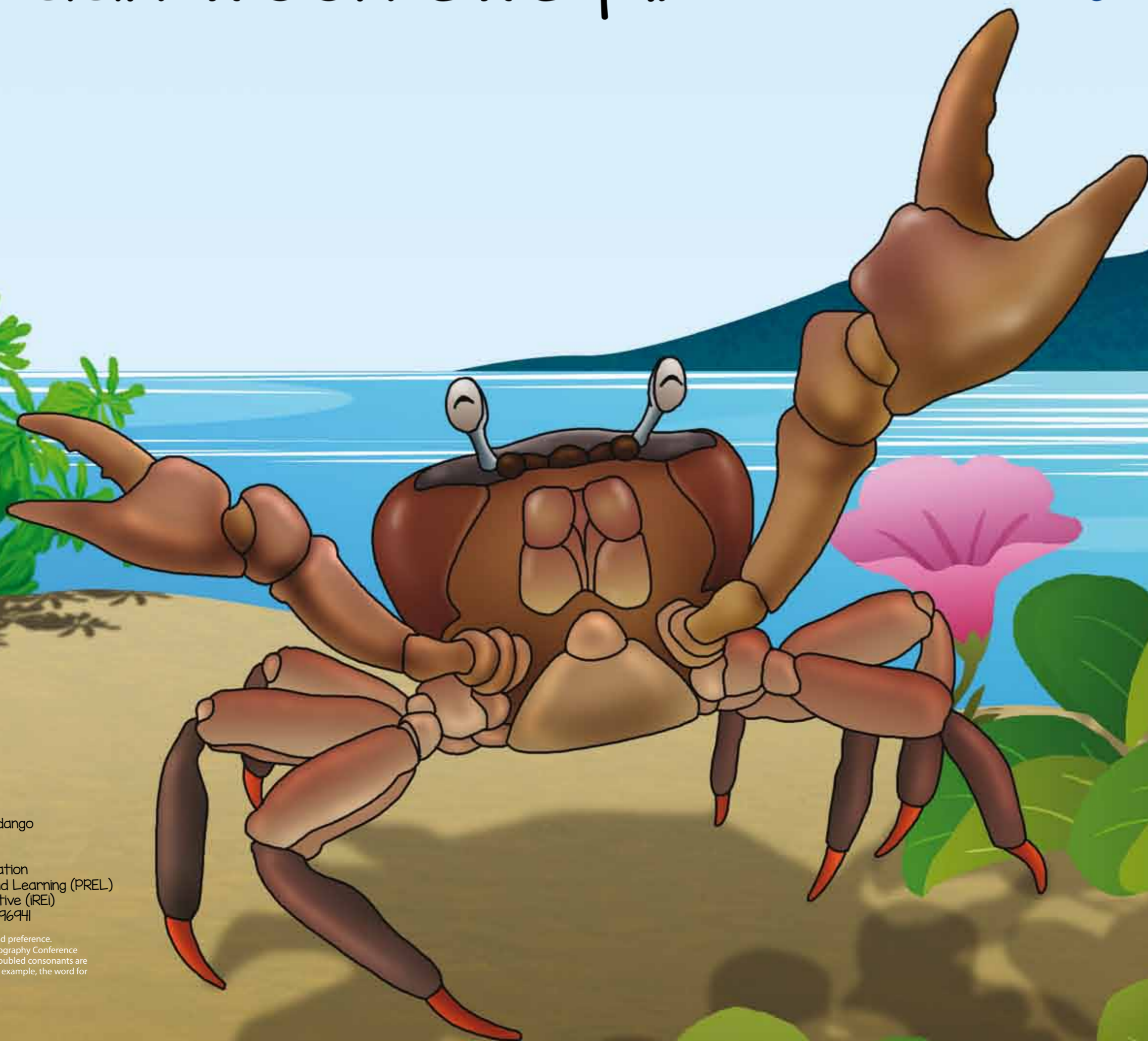


Ewe Kúkkún Nipwpwei

The Little Crab

Kúkkún nipwpwei fetán
fetán wóón ewe pi.
Aa púng ewe ráán,
nipwpwei aa sáá.
Aa tin ewe akkar
aa pwas ewe pi.
Kúkkún nipwpwei fetán
sáfáán wóón ewe pi.

Little crab walks and
walks on the shore.
The rain begins to fall,
the crab runs away.
The sun comes out
and dries up the sand.
Little crab walks
again on the shore.



Authors: Dorsalina William, Cheryl Tsuyuki
Illustrator: Tea-SC Studio
Graphic design: Jyngalim Design
Review: Chuuk DOE, Emily Lam, Emerson Odango
Creative support: Danko Tabaroši

Concept: Chuuk State Department of Education
Coordination: Pacific Resources For Education and Learning (PREL)
Publisher: Island Research & Education Initiative (IREI)
PO Box PS 303, Pohnpei, Pohnpei, FM 96941

The choice of Chuukese vocabulary in this book depends on authors' own dialect and preference.
The Chuukese spelling in this book conforms to the decisions of the Chuukese Orthography Conference
with one major exception. As per Chuuk State DOE practice and wish, word-initial doubled consonants are
not indicated in spelling and are represented by single instead of double letters. For example, the word for
sand, 'ppil' is spelled 'pi' even though the first sound is pronounced as doubled.



Chuuk State
Department of Education



Pacific Resources for
Education and Learning



Island Research &
Education Initiative