


# Ke Alaka'i: Special Education Leadership Project

## Preparing Special Education Teacher Educators



# Awarding 6 Grants

# \$132,000 each

The focus of the grant is to develop university faculty who will become teacher educators in Hawai'i and/or the Pacific region.

### \*Financial Support Includes:

- \$26,000/year stipend for 5 years
- Initial \$2000 technology stipend

### Ph.D. Eligibility Requirements:

- Master's Degree in special education, disability studies, or related field from accredited institution
- 3.0 minimum GPA (last four semesters of the undergraduate record and all post-baccalaureate work)
- Minimum of three years of practical experience in education and/or exceptionalities
- Official GRE test results, current within 5 years

### Ke Alaka'i Eligibility Requirements:

- Citizenship of US or US jurisdiction
- Emphasis area in distance special education personnel preparation
- Acceptance in the Ph.D. in Education Program, Exceptionalities Specialization for Spring 2017

*\*Required scholar service obligation (payback) of two years working in a special education leadership position in the United States (or its jurisdictions) for each year of financial support. Service obligation monitored by the federal government.*



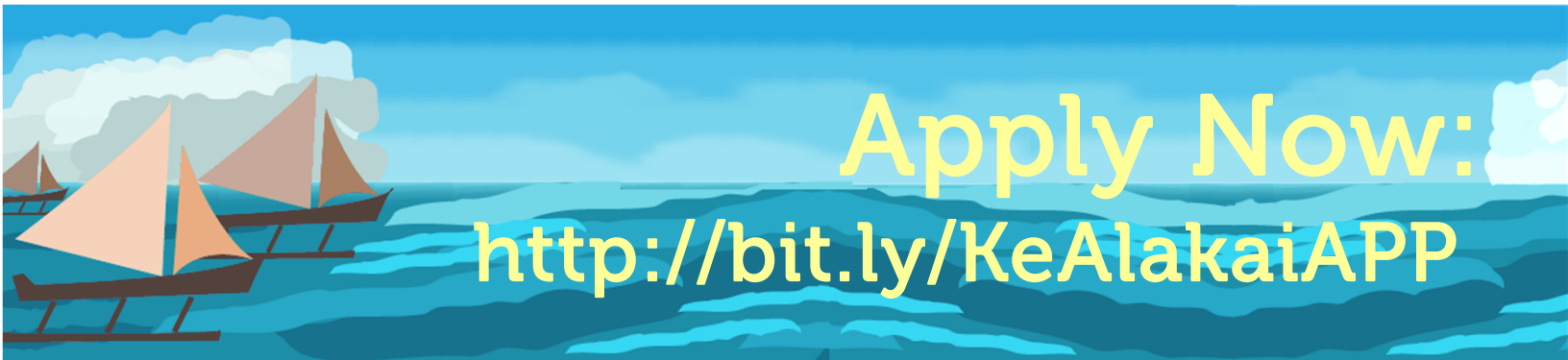
Applications and materials must be submitted by:  
**October 1, 2016**

Interested or have questions?

<http://bit.ly/spedinfo>

# Spring 2017

## Ke Alaka'i: Special Education Leadership Project



### Program Overview

Ke Alaka'i program requirements:

- Enrollment in at least 9 semester hours of program course requirements each semester
- Participation in bi-weekly special education seminars focusing on evidence-based practices, multicultural special education, & distance teacher education
- Participation in weekly faculty mentorship activities focused on special education research and professional development
- Intensive support and advising from special education faculty
- Completion of degree requirements (including doctoral dissertation) within 5 years

*We strongly recommend that trainees refrain from full-time employment during their traineeship to facilitate degree completion within the 5 project years.*

Leadership roles in special education include such positions as faculty at a college or university, researcher, district resource teacher, district or state-level administrator, agency program director or administrator, or special education consultant.

### How to Apply

Receive a step-by-step application guide

<http://bit.ly/spedinfo>

**Application:** OGE paper application, along with \$100 application fee.

**Transcripts:** ALL non-UH post secondary institutions you have attended.

**GRE Scores:** Test scores current within 5 years

**Statement of Objectives:** Professional and research-focused, addressing project priorities of evidence-based practices, multicultural special education, and distance teacher education.

**Formal Writing Sample:** Published article, thesis, research proposal, etc.

**Three Letters of Recommendation  
Curriculum Vitae**

An oral interview may be requested by the Exceptionalities Specialization after you have submitted all necessary application materials.

### To Apply for this Grant

**DO NOT** send any materials to the UHM Office of Graduate Education  
Use the step-by-step application guide and send **application and materials** by **October 1, 2016**.

MORE PROGRAM INFORMATION IS AVAILABLE AT

<https://coe.hawaii.edu/academics/special-education/phd-exceptionalities>